



Ürün Özellikleri

- Gövde** RAL 9016 elektrostatik toz boyalı sac.
- Reflektör** Mat reflektör. Yüksek kaliteli %99.99 saflıkta alüminyum. Yansımaya %95.
- Balast** Elektronik ve Dim edilebilir balast seçeneği.
- Acil Çıkış** 1 veya 3 saatlik acil çıkış seçenekleri.

Specifications

- Body** Steel sheet painted with electrostatic powder coated RAL 9016
- Reflector** Matt reflector. High quality %99.99 pure aluminium. Total reflection is 95%.
- Ballast** Electronic and Dimmable ballast option.
- Integral Emergency** 1 or 3 hours integral emergency.

Uygulama Alanları / Applications

- Ofisler / Offices
- Resepsiyon Alanları / Reception Areas
- Okullar / Schools
- Koridorlar / Corridors
- Mağazalar / Stores

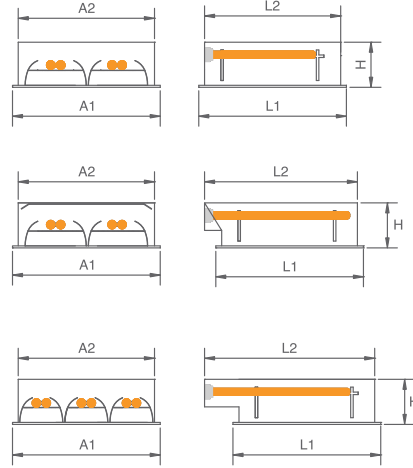
VVG / Manyetik Balast VVG / Low Loss Ballast

| Güç Power | Lamba Lamp | Ölçüler Dimensions | | | | | kg | Kod Code | |
|-----------|------------|--------------------|-----|-----|-----|----|-----|----------|---------------|
| | | A1 | A2 | L1 | L2 | H | | VVG | Dimli Dimming |
| 2X11W | TC | 295 | 275 | 295 | 275 | 80 | 1.9 | 605 211 | - |
| 2X18W | TC-L | 295 | 275 | 295 | 275 | 80 | 1.9 | 605 218 | - |
| 3X18W | TC-L | 295 | 275 | 295 | 275 | 80 | 2.0 | 605 318 | - |
| 2X24W | TC-L | 295 | 275 | 295 | 321 | 80 | 1.9 | 605 224 | - |
| 3X24W | TC-L | 295 | 275 | 295 | 321 | 80 | 2.0 | 605 324 | - |

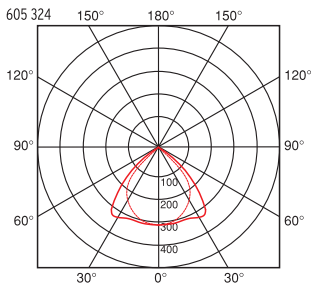
EVG / Elektronik Balast EVG / Electronic Ballast

| Güç Power | Lamba Lamp | Ölçüler Dimensions | | | | | kg | Kod Code | |
|-----------|------------|--------------------|-----|-----|-----|----|-----|-------------|---------------|
| | | A1 | A2 | L1 | L2 | H | | EVG | Dimli Dimming |
| 2X11W | TC | 295 | 275 | 295 | 275 | 80 | 1.9 | 605 211-EVG | 605 211-DIM |
| 2X18W | TC-L | 295 | 275 | 295 | 275 | 80 | 1.9 | 605 218-EVG | 605 218-DIM |
| 3X18W | TC-L | 295 | 275 | 295 | 275 | 80 | 2.0 | 605 318-EVG | 605 318-DIM |
| 2X24W | TC-L | 295 | 275 | 295 | 321 | 80 | 1.9 | 605 224-EVG | 605 224-DIM |
| 3X24W | TC-L | 295 | 275 | 295 | 321 | 80 | 2.0 | 605 324-EVG | 605 324-DIM |

| Lamba Lamp | TC | TC-L |
|----------------|--|--|
| Sembol Symbol |  230V - 50 Hz |  230V - 50 Hz |
| Duy Lampholder | G23 | 2G11 |

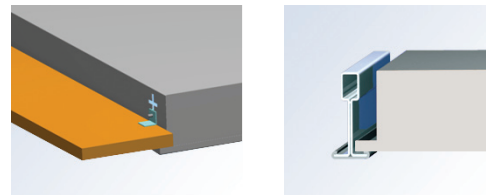


Fotometrik Bilgi Photometric Data



Tavan Sistemleri Ceiling Systems

T15, T25 ve alçı tavanlar için uygundur.
Suitable for exposed T15, T25 or lay in.



Kompakt Lambalı Sıva Altı Armatürler Recessed Luminaires With Compact Lamp

nira

Ürün Özellikleri

Gövde RAL 9016 elektrostatik toz boyalı sac.

Reflektör Mat reflektör. Yüksek kaliteli %99.99 saflıkta alüminyum. Yansıma %95.

Balast Elektronik ve Dim edilebilir balast seçeneği.

Acil Çıkış 1 veya 3 saatlik acil çıkış seçenekleri.

Specifications

Body Steel sheet painted with electrostatic powder coated RAL 9016

Reflector Matt reflector. High quality %99.99 pure aluminium. Total reflection is 95%.

Ballast Electronic and Dimmable ballast option.

Integral Emergency 1 or 3 hours integral emergency.

Uygulama Alanları / Applications

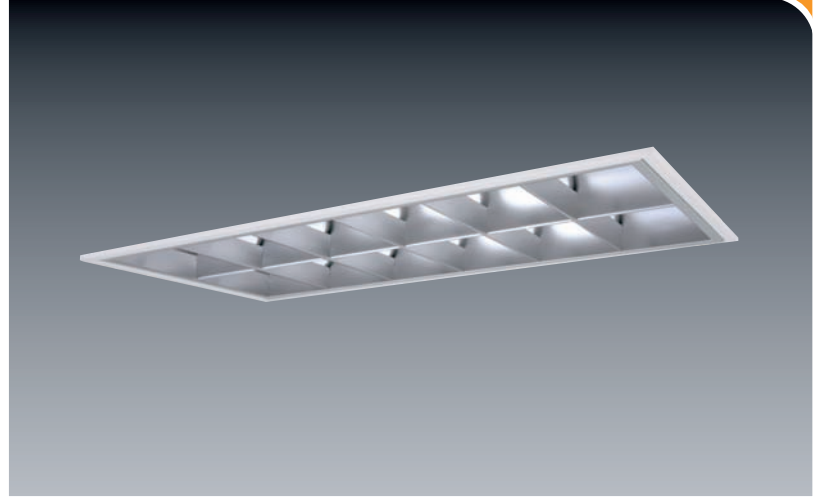
Ofisler / Offices

Resepsiyon Alanları / Reception Areas

Okullar / Schools

Koridorlar / Corridors

Mağazalar / Stores

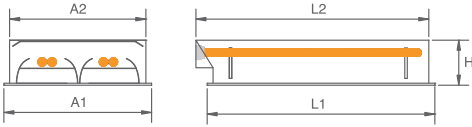


VVG / Manyetik Balast VVG / Low Loss Ballast

| Güç Power | Lamba Lamp | Ölçüler Dimensions | | | | | kg | Kod Code | |
|-----------|------------|--------------------|-----|-----|-----|----|-----|----------|---------------|
| | | A1 | A2 | L1 | L2 | H | | VVG | Dimli Dimming |
| 2X36W | TC-L | 295 | 275 | 595 | 575 | 80 | 2.5 | 605 234 | - |

EVG / Elektronik Balast EVG / Electronic Ballast

| Güç Power | Lamba Lamp | Ölçüler Dimensions | | | | | kg | Kod Code | |
|-----------|------------|--------------------|-----|-----|-----|----|-----|-------------|---------------|
| | | A1 | A2 | L1 | L2 | H | | EVG | Dimli Dimming |
| 2X36W | TC-L | 295 | 275 | 595 | 575 | 80 | 2.5 | 605 234-EVG | 605 234-DIM |
| 2X55W | TC-L | 295 | 275 | 595 | 575 | 80 | 2.5 | 605 254-EVG | 605 254-DIM |



Lamba Lamp

TC-L

Sembol Symbol

 230V - 50 Hz

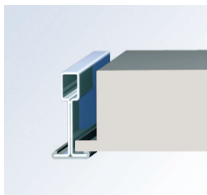
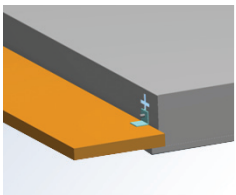
Duy Lampholder

2G11

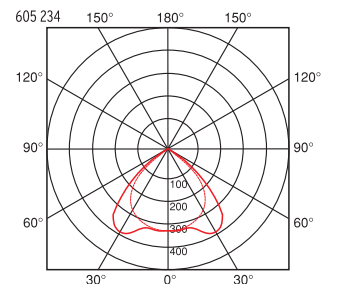
Tavan Sistemleri Ceiling Systems

T15, T25 ve alçı tavanlar için uygundur.

Suitable for exposed T15, T25 or lay in.



Fotometrik Bilgi Photometric Data



EN 60598-2-2:2002



Ürün Özellikleri

- Gövde** RAL 9016 elektrostatik toz boyalı sac.
- Reflektör** Yüksek kaliteli %99.99 saflıkta alüminyum. Yansımaya %95. Mat ve Parlak seçeneği mevcuttur.
- Balast** Elektronik ve Dim edilebilir balast seçeneği.
- Acil Çıkış** 1 veya 3 saatlik acil çıkış seçenekleri.

Specifications

- Body** Steel sheet painted with electrostatic powder coated RAL 9016
- Reflector** Matt reflector. High quality %99.99 pure aluminium. Total reflection is 95%.
- Ballast** Electronic and Dimmable ballast option.
- Integral Emergency** 1 or 3 hours integral emergency.

Uygulama Alanları / Applications

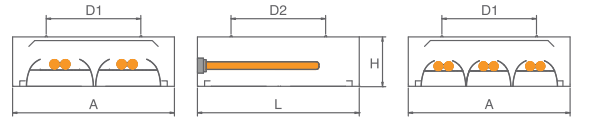
- Ofisler / Offices
- Resepsiyon Alanları / Reception Areas
- Okullar / Schools
- Koridorlar / Corridors
- Mağazalar / Stores

VVG / Manyetik Balast VVG / Low Loss Ballast

| Güç Power | Lamba Lamp | Ölçüler Dimensions | | | | | kg | Kod Code | |
|-----------|------------|--------------------|-----|-----|-----|----|-----|----------|---------------|
| | | A1 | L1 | D1 | D2 | H | | VVG | Dimli Dimming |
| 2X11W | TC | 350 | 350 | 190 | 228 | 80 | 2.5 | 663 214 | - |
| 2X18W | TC-L | 350 | 350 | 190 | 228 | 80 | 2.5 | 663 204 | - |
| 3X18W | TC-L | 350 | 350 | 190 | 228 | 80 | 3.0 | 663 208 | - |
| 2X24W | TC-L | 350 | 350 | 190 | 228 | 80 | 3.0 | 663 224 | - |
| 3X24W | TC-L | 350 | 350 | 190 | 228 | 80 | 3.0 | 663 324 | - |

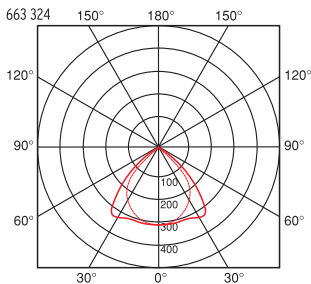
EVG / Elektronik Balast EVG / Electronic Ballast

| Güç Power | Lamba Lamp | Ölçüler Dimensions | | | | | kg | Kod Code | |
|-----------|------------|--------------------|-----|-----|-----|----|-----|-------------|---------------|
| | | A1 | L1 | D1 | D2 | H | | EVG | Dimli Dimming |
| 2X11W | TC | 350 | 350 | 190 | 228 | 80 | 2.5 | 663 214-EVG | 663 214-DIM |
| 2X18W | TC-L | 350 | 350 | 190 | 228 | 80 | 2.5 | 663 204-EVG | 663 204-DIM |
| 3X18W | TC-L | 350 | 350 | 190 | 228 | 80 | 3.0 | 663 208-EVG | 663 208-DIM |
| 2X24W | TC-L | 350 | 350 | 190 | 228 | 80 | 3.0 | 663 224-EVG | 663 224-DIM |
| 3X24W | TC-L | 350 | 350 | 190 | 228 | 80 | 3.0 | 663 324-EVG | 663 324-DIM |



| Lamba Lamp | TC | TC-L |
|----------------|--|--|
| Sembol Symbol |  230V - 50 Hz |  230V - 50 Hz |
| Duy Lampholder | G23 | 2G11 |

Fotometrik Bilgi Photometric Data



Kompakt Lambalı Sıva Üstü Armatürler Surface Mounted Luminaries With Compact Lamp

nira

Ürün Özellikleri

Gövde RAL 9016 elektrostatik toz boyalı sac.

Difüzör Prizmatik desenli akrilik difüzör.

Balast Elektronik ve Dim edilebilir balast seçeneği.

Acil Çıkış 1 veya 3 saatlik acil çıkış seçenekleri.

Specifications

Body Steel sheet painted with electrostatic powder coated RAL 9016

Diffuser Acrylic diffuser with prismatic structured.

Ballast Electronic and Dimmable ballast option.

Integral Emergency 1 or 3 hours integral emergency.

Uygulama Alanları / Applications

Ofisler / Offices

Resepsiyon Alanları / Reception Areas

Okullar / Schools

Koridorlar / Corridors

Mağazalar / Stores



VVG / Manyetik Balast VVG / Low Loss Ballast

| Güç Power | Lamba Lamp | Ölçüler Dimensions | | | | | kg | Kod Code | |
|-----------|------------|--------------------|-----|-----|-----|----|-----|----------|---------------|
| | | A1 | L1 | D1 | D2 | H | | VVG | Dimli Dimming |
| 2X11W | TC | 350 | 350 | 190 | 228 | 80 | 2.5 | 664 214 | - |
| 2X18W | TC-L | 350 | 350 | 190 | 228 | 80 | 2.5 | 664 204 | - |
| 3X18W | TC-L | 350 | 350 | 190 | 228 | 80 | 3.0 | 664 208 | - |
| 2X24W | TC-L | 350 | 350 | 190 | 228 | 80 | 3.0 | 664 224 | - |
| 3X24W | TC-L | 350 | 350 | 190 | 228 | 80 | 3.0 | 664 324 | - |

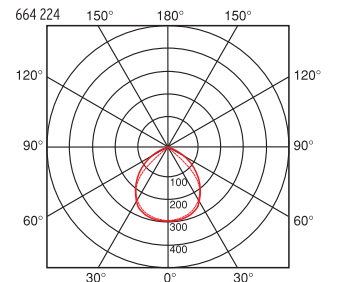
EVG / Elektronik Balast EVG / Electronic Ballast

| Güç Power | Lamba Lamp | Ölçüler Dimensions | | | | | kg | Kod Code | |
|-----------|------------|--------------------|-----|-----|-----|----|-----|-------------|---------------|
| | | A1 | L1 | D1 | D2 | H | | EVG | Dimli Dimming |
| 2X11W | TC | 350 | 350 | 190 | 228 | 80 | 2.5 | 664 214-EVG | 664 214-DIM |
| 2X18W | TC-L | 350 | 350 | 190 | 228 | 80 | 2.5 | 664 204-EVG | 664 204-DIM |
| 3X18W | TC-L | 350 | 350 | 190 | 228 | 80 | 3.0 | 664 208-EVG | 664 208-DIM |
| 2X24W | TC-L | 350 | 350 | 190 | 228 | 80 | 3.0 | 664 224-EVG | 664 224-DIM |
| 3X24W | TC-L | 350 | 350 | 190 | 228 | 80 | 3.0 | 664 324-EVG | 664 324-DIM |

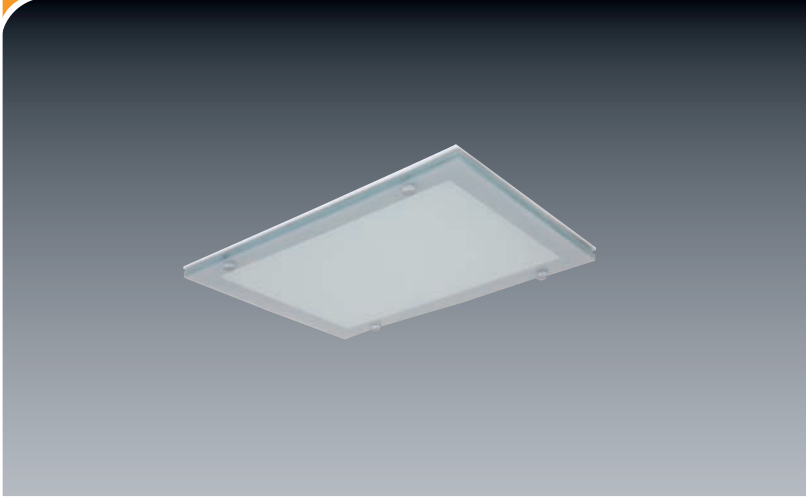
| Lamba Lamp | TC | TC-L |
|----------------|---|--|
| Sembol Symbol |  230V - 50 Hz |  230V - 50 Hz |
| Duy Lampholder | G23 | G211 |



Fotometrik Bilgi Photometric Data



EN 60598-2-2:2001



VVG / Manyetik Balast VVG / Low Loss Ballast

| Güç Power | Lamba Lamp | Ölçüler Dimensions | | | | | kg | Kod Code | |
|-----------|------------|--------------------|-----|-----|-----|-----|-----|----------|---------------|
| | | A1 | A2 | L1 | L2 | H | | VVG | Dimli Dimming |
| 2X24W | TC-L | 340 | 305 | 340 | 305 | 120 | 3.5 | 607 224 | - |
| 2X18W | TC-L | 340 | 305 | 340 | 305 | 120 | 3.5 | 607 218 | - |

EVG / Elektronik Balast EVG / Electronic Ballast

| Güç Power | Lamba Lamp | Ölçüler Dimensions | | | | | kg | Kod Code | |
|-----------|------------|--------------------|-----|-----|-----|-----|-----|-------------|---------------|
| | | A1 | A2 | L1 | L2 | H | | EVG | Dimli Dimming |
| 2X24W | TC-L | 340 | 305 | 340 | 305 | 120 | 3.5 | 607 224-EVG | 607 224-DIM |
| 2X18W | TC-L | 340 | 305 | 340 | 305 | 120 | 3.5 | 607 218-EVG | 607 218-DIM |

| | |
|----------------|--|
| Lamba Lamp | TC-L |
| Sembol Symbol |  230V - 50 Hz |
| Duy Lampholder | 2G11 |

Ürün Özellikleri

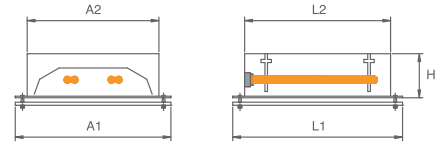
- Gövde** RAL 9016 elektrostatik toz boyalı sac.
- Cam** Asit indirgenmiş temperli cam.
- iç Reflektör** Parlak reflektör. Yüksek kaliteli %99.99 saflıkta alüminyum. Yansıma %95.
- Balast** Elektronik ve Dim edilebilir balast seçeneği.
- Acil Çıkış** 1 veya 3 saatlik acil çıkış seçenekleri.

Specifications

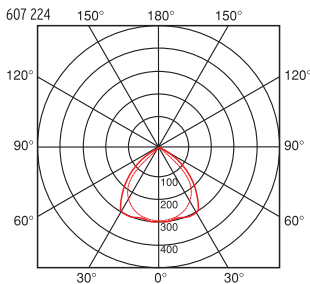
- Body** Steel sheet painted with electrostatic powder coated RAL 9016
- Glass** Tempered glass with reduced acid.
- Inner Reflector** Specular reflector. High quality %99.99 pure aluminium. Total reflection is 95%.
- Ballast** Electronic and Dimmable ballast option.
- Integral Emergency** 1 or 3 hours integral emergency.

Uygulama Alanları / Applications

- Ofisler / Offices
- Resepsiyon Alanları / Reception Areas
- Okullar / Schools
- Koridorlar / Corridors
- Mağazalar / Stores

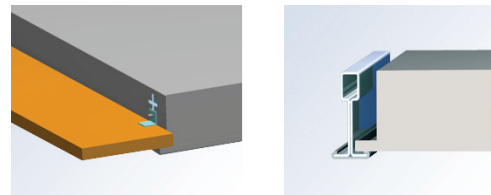


Fotometrik Bilgi Photometric Data



Tavan Sistemleri Ceiling Systems

T15, T25 ve alçı tavanlar için uygundur.
Suitable for exposed T15, T25 or lay in.



Kompakt Lambalı Sıva Altı Armatürler Recessed Luminaries With Compact Lamp

mira

Ürün Özellikleri

Gövde RAL 9016 elektrostatik toz boyalı sac.

Cam Asit indirgenmiş temperli cam.

İç Reflektör Parlak reflektör. Yüksek kaliteli %99.99 safılıkta alüminyum. Yansıma %95.

Balast Elektronik ve Dim edilebilir balast seçeneği.

Acil Çıkış 1 veya 3 saatlik acil çıkış seçenekleri.

Specifications

Body Steel sheet painted with electrostatic powder coated RAL 9016

Glass Tempered glass with reduced acid.

Inner Reflector Specular reflector. High quality %99.99 pure aluminium. Total reflection is 95%.

Ballast Electronic and Dimmable ballast option.

Integral Emergency 1 or 3 hours integral emergency.

Uygulama Alanları / Applications

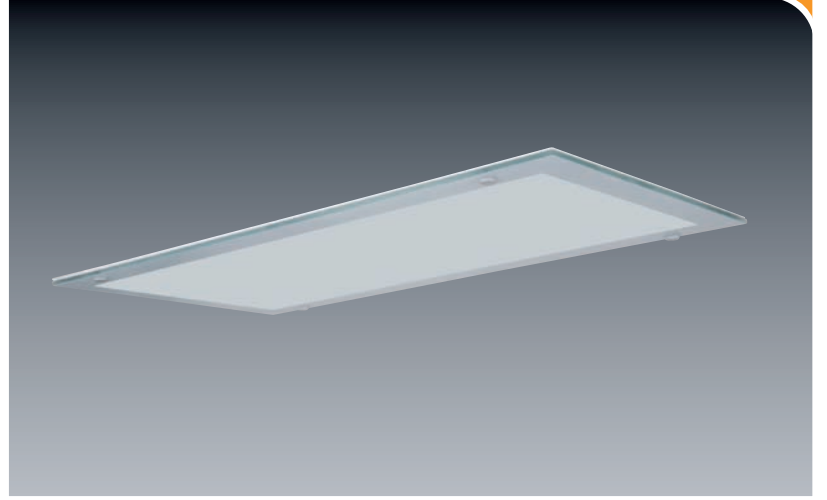
Ofisler / Offices

Resepsiyon Alanları / Reception Areas

Okullar / Schools

Koridorlar / Corridors

Mağazalar / Stores

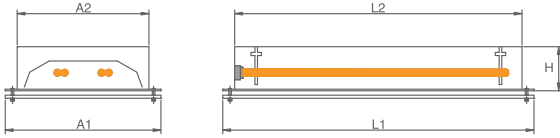



VVG / Manyetik Balast VVG / Low Loss Ballast

| Güç Power | Lamba Lamp | Ölçüler Dimensions | | | | | kg | Kod Code | |
|-----------|------------|--------------------|-----|-----|-----|----|-----|----------|---------------|
| | | A1 | A2 | L1 | L2 | H | | VVG | Dimli Dimming |
| 2X36W | TC-L | 300 | 265 | 600 | 565 | 85 | 5.4 | 608 236 | - |

EVG / Elektronik Balast EVG / Electronic Ballast

| Güç Power | Lamba Lamp | Ölçüler Dimensions | | | | | kg | Kod Code | |
|-----------|------------|--------------------|-----|-----|-----|----|-----|-------------|---------------|
| | | A1 | A2 | L1 | L2 | H | | EVG | Dimli Dimming |
| 2X36W | TC-L | 300 | 265 | 600 | 565 | 85 | 5.4 | 608 236-EVG | 608 236-DIM |
| 2X55W | TC-L | 300 | 265 | 600 | 565 | 85 | 5.4 | 608 255-EVG | 608 255-DIM |

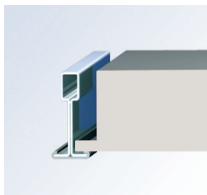
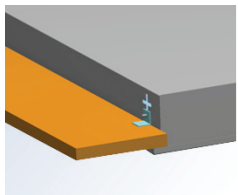


| | |
|----------------|--|
| Lamba Lamp | TC-L |
| Sembol Symbol |  230V - 50 Hz |
| Duy Lampholder | 2G11 |

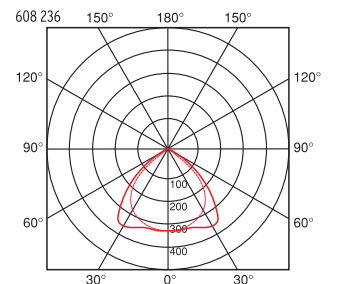
Tavan Sistemleri Ceiling Systems

T15 , T25 ve alçı tavanlar için uygundur.

Suitable for exposed T15, T25 or lay in.



Fotometrik Bilgi Photometric Data



EN 60598-2-2:2002