







Ürün Özellikleri

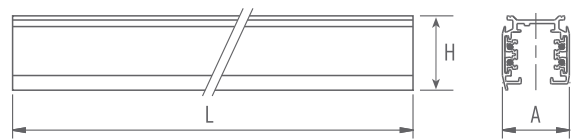
Gövde Alüminyum

Specifications

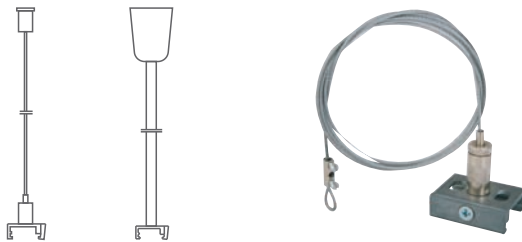
Body Extruded aluminium

Ölçüler Dimensions			kg	Kod Code
A	L	H		Standard
32	1000	33	0.9	250 100
32	2000	33	1.8	250 200
32	3000	33	2.7	250 300

Metalik Gri Metallic Grey
 Siyah Black
 Beyaz White



Askı Aksesuarları Suspension Accessories



	1 m	1,5 m	2,5 m
Askı Takımı Suspension Set	804 001	804 004	804 007
Kablo Cable	804 002	804 005	804 008
Askı Elemanı Wire Suspension	804 003	804 006	804 009

Sıva Altı Üç Faz Elektrotray Sistem Recessed Three-Phase Electrotrack System

electra

Ürün Özellikleri

Gövde Alüminyum

Specifications

Body Extruded aluminium

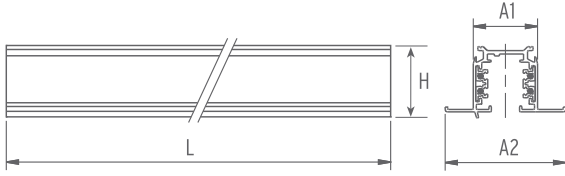
Ölçüler Dimensions				kg	Kod Code
A1	A2	L	H		
60	32.5	1000	33	1.0	251 100
60	32.5	2000	33	2.0	251 200
60	32.5	3000	33	3.0	251 300



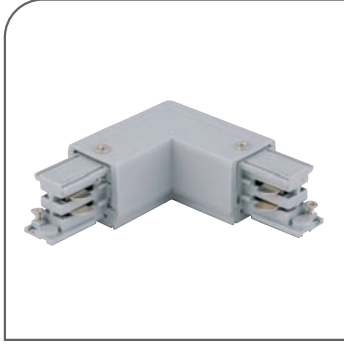
■ Metalik Gri **Metallic Grey**

■ Siyah **Black**

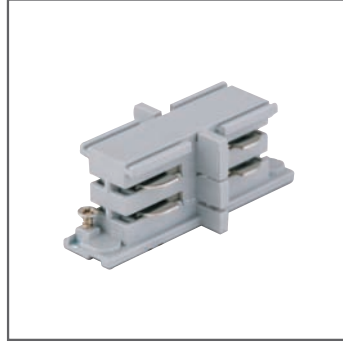
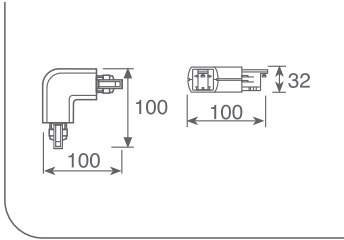
□ Beyaz **White**



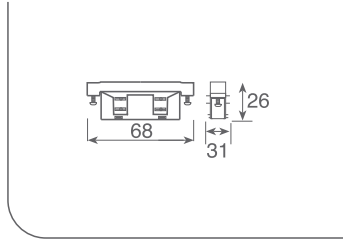
EN 60598-2-2:2002



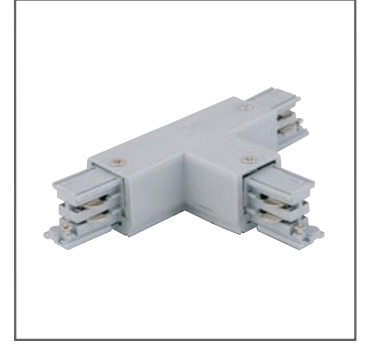
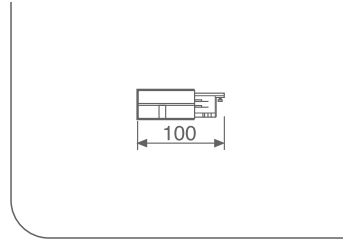
250 010
L Bağlantı **L Connection**



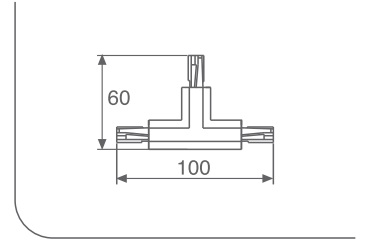
250 015
Ara Bağlantı **Connection Element**



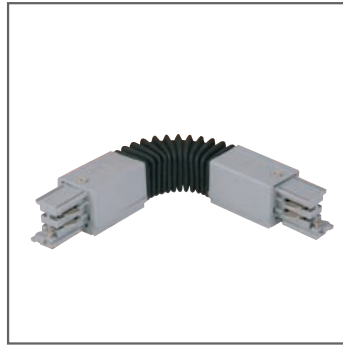
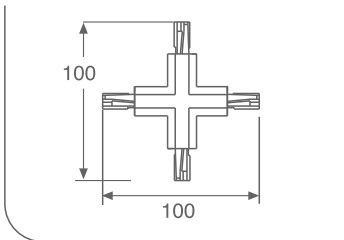
250 020
Enerji Giriş Kapağı **Power Entry Element**



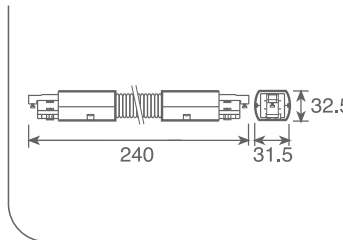
250 025
T - Bağlantı **T - Connection**



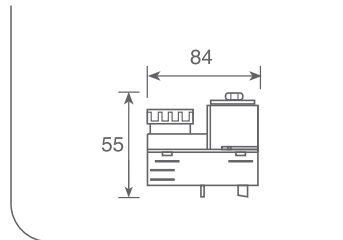
250 065
+ Bağlantı **+ Connection**



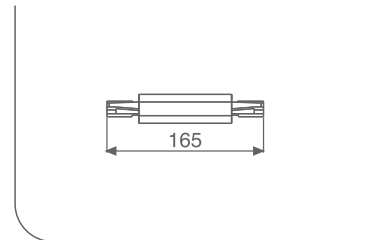
250 035
Körüklü Bağlantı **Flexible Connection**



250 040
Adaptör **Adapter**



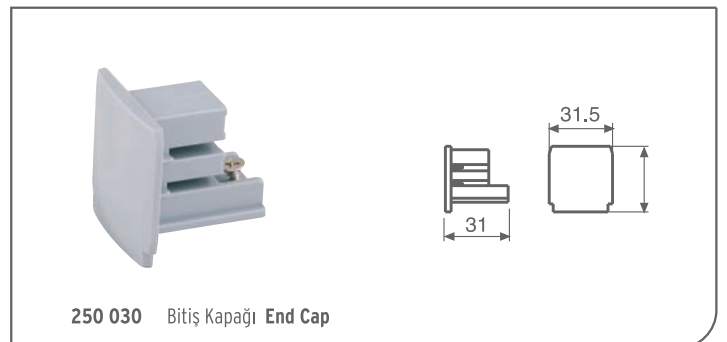
250 045
Ara Bağlantı **Connection Element**



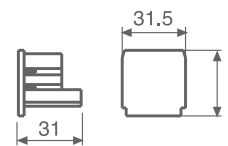
■ Metalik Gri **Metallic Grey**

■ Siyah **Black**

□ Beyaz **White**



250 030 Bitiş Kapağı **End Cap**

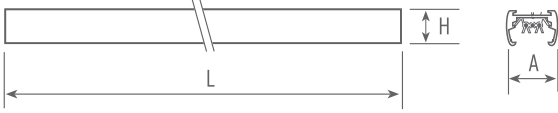


Sıva Üstü Tek Faz Elektroray Sistem Surface Mounted Mono-Phase Electrotrack System

electra



Ölçüler Dimensions			kg	Kod Code
A	L	H		
32	1000	28	0.7	240 106
32	2000	28	1.4	240 108
32	3000	28	2.2	240 110



■ Metalik Gri Metallic Grey

■ Siyah Black

□ Beyaz White



240 112



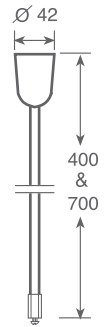
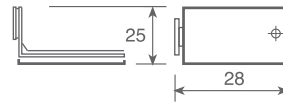
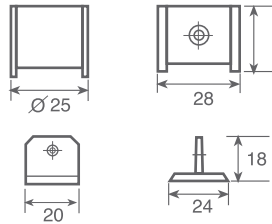
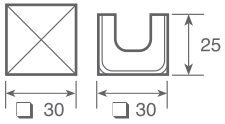
240 116



240 118



240 114



EN 60598-2-1:2001